

Forensic Light Sources

198 Lights

209 Kits & Accessories

Our series of forensic light sources and accessories include a variety of both long and short wave lamps as well as blue lamps for locating and identify a variety of different evidence that fluoresces when exposed to ultraviolet light.

ULTRAVIOLET (UV) LIGHTS FOR CRIME SCENE AND LABORATORY USE

These rugged UV lamps are routinely used by investigators for locating and identifying a variety of different evidence that fluoresces when exposed to ultraviolet light.

Our series of long wave and short wave UV lamps are perfect for applications where compact and lightweight lamps are required. Each long wave model is equipped with a filtered UV tube, providing high UV intensity while absorbing most of the white light. Standard with each short wave model is the inclusion of a **ONGLIFE™** filter glass, which ensures higher initial UV intensity and provides resistance to solarization.

TIP

Long wave UV lamps, also known as black light or Wood's Lamps, are used for locating naturally fluorescing evidence such as semen, urine, saliva, fibers, and bite marks on skin. Short wave lamps are primarily used for enhancing latent prints developed using fluorescent fingerprint powders.

LAW ENFORCEMENT OFFICIALS WORLDWIDE RELY ON UV AND BLUE LIGHT LAMPS FOR A VARIETY OF CRIMINAL INVESTIGATIONS

Latent Fingerprint Examinations

Short wave UV and blue light lamps enable crime scene investigators and lab personnel to see prints that were developed with fluorescent powders.

Sexual Assault Examinations

Long wave UV lamps and blue LED lamps are routinely used by medical personnel for locating foreign material found on the skin of victims of sexual assault.

Arson Investigation

Fire inspectors can see residual accelerant that was not consumed by fire. Under long wave UV light, splash marks from chemical fuels on walls, furniture, and carpets become instantly visible.

Stolen Vehicle Examinations

Illegally removed VIN labels leave telltale "footprints" on vehicles, and these traces are visible under long wave UV light.

Admission/Re-Admission Control

Our Admission/Re-Admission Control System (described on page 209) uses a long wave UV lamp and our Invisible Fluorescent Skin Stamping Ink to verify authorized admission to secured or restricted areas.

Automotive Accident Analysis

Investigators can determine how fast a vehicle was moving at the time of impact by looking for the fluorescent imprint the speedometer needle leaves on the face of the dial using a long and short wave UV lamp.

Counterfeit Document Verification

Drivers' licenses, passports, credit cards, and many other official documents have invisible fluorescent markings that are quickly verified with a long wave UV lamp.

Counterfeit Currency Detection

New U.S. Currency has a distinctive, invisible ink in the security thread. When exposed to a long wave UV lamp, the invisible ink becomes visible. Each denomination glows a different color.

Thief Detection

Our long wave UV lamps are used to fluoresce our Invisible Thief Detection Powders and Pastes. (See pages 211-218 for Thief Detection Products.)

*Validating the authenticity
of a driver's license using a UV Lamp.*



E AND B SERIES OF HANDHELD UV LAMPS

This series of both long and short wave UV Lamps is the most powerful of their type available. They feature a silver-anodized aluminum housing, making this series both attractive and durable. All short wave models come with the unique **ONGLIFE™** filter glass which ensures higher initial UV intensity and is resistant to solarization.

Both long and short wave models come with internal, rust-resistant metal reflectors to optimize UV irradiance. A rocker on/off switch is located on the top of each lamp for convenience. The E Series Lamps (this page, 120V and 230V powered) come with a snap-on, snap-off handle, which is shown on the previous page. B Series Lamps (next page, battery powered) come with a wrist strap.

EA Long Wave UV Lamp

FEATURES

- Available in both 4 and 8 watt BLB filtered tube
- Long wave (365 nm.)
- 4 watt model Typical Peak Intensity $\mu\text{W}/\text{cm}^2$ at 6 inches (15 cm.): 800
- 8 watt model Typical Peak Intensity $\mu\text{W}/\text{cm}^2$ at 6 inches: 1,700
- 4 watt model dimensions: 3.25" W x 8" L x 2.5" H
- 8 watt model dimensions: 3.25" W x 13.25" L x 2.5" H
- 4 watt model weight: 1.75 lbs.
- 8 watt model weight: 2.25 lbs.
- Available in both 120V/60Hz. and 230V/50Hz.
- Supplied with snap-on, snap-off handles

Reorder No.	Description
UVLW-4120	EA-140 4 Watt UV Lamp (120V/60Hz.)
UVLW-8120	EA-180 8 Watt UV Lamp (120V/60Hz.)
UVLW-4230	EA-140/F 4 Watt UV Lamp (230V/50Hz.)
UVLW-8230	EA-180/F 8 Watt UV Lamp (230V/50Hz.)
UVT-4L	Replacement 4 Watt Tube
UVT-8L	Replacement 8 Watt Tube



EF Short Wave UV Lamp

FEATURES

- Available in both 4 and 8 watt tubes with **ONGLIFE™** filters
- Short wave (254 nm.)
- 4 watt model Typical Peak Intensity $\mu\text{W}/\text{cm}^2$ at 6 inches (15 cm.): 570
- 8 watt model Typical Peak Intensity $\mu\text{W}/\text{cm}^2$ at 6 inches: 1,180
- 4 watt model dimensions: 3.25" W x 8" L x 2.25" H
- 8 watt model dimensions: 3.25" W x 13.25" L x 2.5" H
- 4 watt model weight: 2 lbs.
- 8 watt model weight: 2.75 lbs.
- Available in 120V/60Hz. and 230V/50Hz.
- Supplied with snap-on, snap-off handles

Reorder No.	Description
UVSW-4120	EF-140C 4 Watt UV Lamp (120V/60Hz.)
UVSW-8120	EF-180C 8 Watt UV Lamp (120V/60Hz.)
UVSW-4230	EF-140C/F 4 Watt UV Lamp (230V/50Hz.)
UVSW-8230	EF-180C/F 8 Watt UV Lamp (230V/50Hz.)
UVT-4S	Replacement 4 Watt Tube
UVT-8S	Replacement 8 Watt Tube



B-14N Battery Powered, Long Wave UV Lamp

FEATURES

- One 4 watt BLB filtered tube
- Battery powered by 5 "C" cell batteries (included)
- Long wave (365 nm.)
- Typical Peak Intensity $\mu\text{W}/\text{cm}^2$ at 6 inches (15 cm): 730*
- Dimensions: 3.25" W x 8" L x 2.5" H
- Weight: 2 lbs. (with batteries)
- Up to 5 hours of continuous use with new alkaline batteries
- Supplied with wrist carrying strap

* With alkaline batteries (approximately 15% lower intensity if NiCad batteries are used)

Reorder No.	Description
UVLW-4B	B-14N Battery Powered 4 Watt UV Lamp
UVT-4L	Replacement 4 Watt Tube



B-14F Battery Powered, Short Wave UV Lamp

FEATURES

- 4 watt tube with LONGLIFE™ filter
- Battery powered by 5 "C" cell batteries (included)
- Short wave (254 nm.)
- Typical Peak Intensity $\mu\text{W}/\text{cm}^2$ at 6 inches (15 cm.): 420*
- Dimensions: 3.25" W x 8" L x 2.5" H
- Weight: 2.25 lbs. (with batteries)
- Up to 5 hours of continuous use with new alkaline batteries
- Supplied with wrist carrying strap

* With alkaline batteries (approximately 15% lower intensity if NiCad batteries are used)

Reorder No.	Description
UVSW-4B	B-14F Battery Powered 4 Watt UV Lamp
UVT-4S	Replacement 4 Watt Tube



Shirt Pocket, Battery Powered, Long Wave UV Lamp

FEATURES

- Ultraminiature
- Transistorized
- Long wave (365 nm)
- Measures: 2.125" W x 6.25" L x .75" H
- Weight: 6.5 oz.
- Supplied with four "AA" alkaline batteries, a wrist carrying strap, and instructions

Reorder No.	Description
UVLW-4SP	Shirt Pocket Battery Powered Long Wave UV Lamp
UVT-4SP	Replacement 4 Watt Tube



ML-3500 Ultrahigh Intensity UV Long Wave Spot Lamps



Reorder No. UVLW-35B
Battery powered Spot Lamp

If you need a UV Lamp to light up a large area, the ML-3500 is the lamp you've been looking for.

The ML-3500, both the battery powered and the 120V AC powered spot lamps, employ state-of-the-art Micro Discharge Light technology which produces a UV intensity of 50,000 $\mu\text{W}/\text{cm}^2$ at 15" (38 cm.) — up to ten times the output of conventional high intensity UV lamps. These lamps are so powerful, they will even expose evidence in direct sun or ambient light.

230V/50Hz. models available. Call for more information.



Reorder No. UVLW-35120
120V AC powered Spot Lamp

FEATURES

- 35 watt Micro Discharge Light (MDL) bulb
- Average bulb life of 2,000 hours
- Bulb/reflector prefocused at factory to ensure peak performance
- Long wave (365 nm.)
- 7.5" (19 cm.) lamp lens diameter
- Lamp weight: 2.5 lbs. (1.1 kg.)
- AC base weight: 3.6 lbs. (1.6 kg.)
- Battery pack weight: 7.5 lbs. (3.4 kg.)
- On/Off switch on contoured pistol grip lamp handle
- 8' long lamp cord for both AC and DC battery powered models
- 8' long power cord for AC powered models
- 8' long battery charger cord for DC models
- Lamp housing never gets hot
- Lamp housing base made from a tough polymer material — will not dent, crack, or scratch
- Lamp can be attached to base, as shown above, allowing for hands-free operation
- Battery powered model comes with a 12 volt, 7 amp./hr. rechargeable battery which provides up to 2 hours of continuous use
- Battery pack is supplied with Battery Charger which plugs in to a 120V outlet
- Lamp base contains all solid state electronics for both 120V and Battery Powered models
- Carrying case

Reorder No.	Description
UVLW-35B	ML-3500MS UV Long Wave Spot Lamp (Battery Powered)
UVLW-35120	ML-3500S UV Long Wave Spot Lamp - (120V/60Hz.)
UVT-35L	Replacement 35 Watt Spot Bulb

TIP

Please see our Forensic Light Sources Accessories on page 210 to purchase Orange UV Absorbing Goggles (Reorder No. UVA-GO) that should be used with these lights.

B-260 Battery Powered, Freestanding, Long Wave UV-A Lamp

Precision engineered to provide you with hours of trouble-free use, the B-260 is built for tough use, both in the lab and the field. The lamp housing is made from a tough, high-impact plastic, and a stainless steel guard protects the UV-A tubes from breakage.

The B-260 is powered by an internal 6 volt rechargeable lead-acid battery that provides up to seven hours of continuous use and is designed to last four to five years under normal conditions. The battery is rated for 200 to 1000 charge/discharge cycles, depending on the depth of discharge. The B-260 includes a red LED light which indicates when the lamp is on to help prevent inadvertent battery drain and is supplied with a built-in AC recharger.



FEATURES

- Two integrally filtered 6 watt tubes
- Long wave (365 nm.)
- Typical Peak Intensity $\mu\text{W}/\text{cm}^2$ at 6 inches (15 cm.): 850
- Dimensions: 3.25" W x 10" H x 5.75" D
- Weight: 4 lbs. (with batteries)
- Up to 7 hours of continuous use
- Battery powered, 6 volt rechargeable battery
- To conserve battery use, the operator selects one or two tubes operation
- Built-in AC battery charger with charging cord

Reorder No.	Description
UVLW-260B	B-260 Battery Powered 6 Watt UV Lamp
UVT-6L	Replacement 6 Watt UV-A Tube

** 230V/50Hz. models available. Call for more information.*

UV-5NF Battery Powered, Long Wave and Short Wave UV Lamp

The UV-5NF provides you with both long wave (365 nm.) and short wave (254 nm.) capabilities and is an excellent selection for locating all types of evidence at a crime scene.

The lamp is supplied with a LONGLIFE™ filter glass with a sliding, dual-wavelength selector cover. The LONGLIFE™ filter glass ensures higher initial UV intensity and is resistant to solarization.



FEATURES

- 5 watt multiband tube and filter assembly
- Both long wave (365 nm.) and short wave (254 nm.)
- Sliding, dual-wavelength, LONGLIFE™ filter glass selector cover
- Battery powered by 4 "AA" batteries (included)
- AC power adapter
- Typical Peak Intensity $\mu\text{W}/\text{cm}^2$ at 6 inches (15 cm.): 80
- Dimensions: 1" W x 6¼" L x 2" H
- Weight: 10 oz. (283.5 kg.) (with batteries)
- Up to 4 to 6 hours of use with new "AA" batteries
- Supplied with a nylon wrist carrying strap

Reorder No.	Description
UVLSW-5B	UV-5NF Long and Short Wave 5 Watt UV Lamp
UVT-5LS	Replacement 5 Watt Tube

**NEW ITEM**

TRIBRITE Tactical Handheld Forensic Light Sources

TRITECHFORENSICS is pleased to introduce TRIBRITE to our new line of tactical forensic lights. TRIBRITE lights feature super-bright LED technology housed in a rugged waterproof, shock resistant, anti-roll, slip-resistant aluminum body. These lights are battery powered and are supplied with a 110v charger. The LED technology allows for ultra long battery life between charges. TRIBRITE lights are available in 2 wavelengths: 415 nm. and 460 nm.

The TRIBRITE 415 has a UV beam color of light purple and is excellent for detecting latent prints treated with fluorescing powders or dyes, examining documents or currency, locating bodily fluids, or trace evidence discovery.

The TRIBRITE 460 has a UV beam color of bright blue and is superior for locating trace evidence such as hair or fibers, detecting bodily fluids, conducting SANE examinations for wounds or bruises, and for detecting fluorescent powder on latent print.

It is recommended that both lights be used while wearing orange spectacles (Reorder No. UVA-GO).



TRIBRITE 415 Tactical

- Typical Applications: Latent Prints Treated with Fluorescing Powders or dyes, Document/Currency Examination, Bodily Fluids, and Trace Evidence
- Size: 162 L x 26.5 D x 37.5(Head) mm. (6.5" overall L)
- Weight: Lightweight 7.4 oz. (210 g.)
- Aluminium T6 Aircraft Grade Material
- Waterproof and Shock Resistant
- Light Output 415 nm.
- UV Beam Color: Light Purple
- High Power LED
- 3 Watt power consumption
- 18650 Lithium Ion Battery
- Battery run time: 300 minutes/5 hours
- 110v Charger

TRIBRITE 460 Tactical

- Typical Applications: Trace Evidence (Hair/Fibers), Bodily Fluids, SANE (Wounds/ Bruises), and Latent Prints Treated with Fluorescing Powders or Dyes.
- Size: 162 L x 26.5 D x 37.5(Head) mm. (6.5" overall L)
- Weight: Lightweight 7.4 oz. (210g.)
- Aluminium T6 Aircraft Grade Material
- Waterproof and Shock Resistant
- Light Output: 460 nm.
- UV Beam Color: Bright Blue
- High Power LED
- 3 Watt power consumption
- 18650 Lithium Ion Battery
- Battery run time = 300 minutes/5 hours
- 110v Charger



FEATURES

Reorder No.	Description
-------------	-------------

UVF-415	TRIBRITE 415 Tactical - Light Purple
UVF-460	TRIBRITE 460 Tactical - Bright Blue
UVA-GO	Orange UV Absorbing Spectacles



OFK-7000 OPTIMAX™ Multi-Lite™ Kit

NEW ITEM

The OFK-7000 OPTIMAX™ Multi-Lite™ Kit features seven Qwik-Connect™ interchangeable LED lamp heads and a rugged, black-anodized aluminum flashlight body. A full-spectrum light source, it provides single-wavelength illumination in UV-A, blue, green, cyan, amber, red and white light. The light offers super-bright visible LED optical output and ultra-high intensity UV-A LED performance. It is ideal for crime-scene investigation, gathering potential evidence, and forensic laboratory work.

Enhances the Detection, Inspection and Photography of:

- Biological stains and latent fingerprints
- Blood and other bodily fluids
- Bruises/bite marks/pattern wounds
- Hair and fibers
- Grease, oil, and other petroleum-based stains
- Questionable documents

LAMP HEAD COLOR	LED Light Output	Dominant Wavelength or Color Temperature at 25°	Bandwidth (nm)	Typical Output at 700 mA	Use These Spectacles and/or Contrast Filters	Application (Typical Inspection Samples)
BLACK	UV	365 nm.	360-370	310mW	UV-absorbing spectacles	Natural and UV fluorescent dyes and powders, bite marks, bruising, pattern wounds, rare document/stamp/artwork examination
BLUE	Blue	450 nm.	440-460	480mW	Yellow or Orange	Biological stains (proteins, semen, urine) on white background, basic yellow, bone, blood, and other trace bodily fluids
CYAN	Cyan	500 nm.	490-510	100 lumens	Orange	Rhodamine 6G, DFO, or indanedione latent fingerprints
GREEN	Green	525 nm.	520-550	100 lumens	Orange or Red	Enhance Ninhydrin-treated samples with background reduction, fibers
GOLD	Amber	590 nm.	585-597	75 lumens	Red	Fluorescent background on sample contrast
RED	Red	630 nm.	620-645	100 lumens	N/A	Hair, questionable documents
SILVER	White	6500°K	4,000°-10,000°K	100 lumens	N/A	General field illumination and inspection

FEATURES

- Cordless, rugged, corrosion-resistant, black-anodized aluminum flashlight body stands up to heavy use in the field or laboratory.
- Seven Qwik-Connect™ interchangeable, single-wavelength LED lamp heads provide ultimate versatility.
- Detachable diffusing filter provides uniformity of light for forensic photography.
- Three snap-on contrast filters (yellow, orange and red) allow for multiple users of lamp without the need to wear spectacles.
- Instant-on operation allows the lamp to reach full intensity immediately.
- Electronic Intensity Stabilizer ensures consistent performance. Beam strength will not weaken between charges!
- Powered by a rechargeable NiMH battery. Provides 90 minutes of continuous inspection between charges (smart AC and DC chargers included).
- Red/green battery strength indicator light signals when a fresh charge is required.



Reorder No.	Description
CK-OFK7000	OFK-7000 OPTIMAX™ Multi-Lite™ Kit

OFK-450 OPTIMAX Blue LED Forensic Lamp Kit

The Optimax Blue LED Lamp Forensic Kit contains the super-powerful, portable, and rechargeable OPTIMAX™ 450 blue light LED flashlight.

The OFK-450 enhances the detection, inspection, and photography of bodily fluids, biological stains, latent fingerprints, bruises, bite marks, pattern wounds, hair, and fibers.

This lamp is an excellent choice for SANE/Forensic Nurses for use during sexual assault examinations. Crime scene investigators and crime laboratories also choose the Optimax for locating trace evidence and for developing latent prints with fluorescent powders.

The OFK-450 is supplied in a plastic padded carrying case which holds the Blue LED Lamp, detachable diffusing filter, smart AC and DC chargers, belt holster, and orange contrasting spectacles to make fluorescing evidence easier to see and, therefore, collect.

FEATURES

- Battery powered
- Rechargeable NiMH battery (included)
- Provides approximately 90 minutes of continuous inspection between charges.
- Super-high intensity, 450 nm blue light LED
- 50,000-hour LED life
- Instant-on operation; lamp reaches full intensity immediately
- Corrosion-resistant, black-anodized aluminum body stands up to heavy use in field or lab
- Detachable diffusing filter ensures uniformity of light source.
- 10.5" L X 8.25" W X 3.5" H carrying case
- Total kit weight: approximately 2 lbs.



Reorder No.	Description
CK-OFK450	OFK-450 OPTIMAX™ Blue LED Forensic Lamp Kit

TFK-100 Titan® UV/Blue™ Lamp Forensic Kit

Like the Optimax OKF-450 Blue LED Lamp Forensic Kit (Reorder No. CK-OFK450), the Titan UV/Blue enhances the detection, inspection, and photography of bodily fluids, biological stains, latent fingerprints, bruises, bite marks, pattern wounds, hair, and fibers. This lamp is an excellent choice for SANE/Forensic Nurses for use during sexual assault examinations.

This lamp is also used by crime scene investigators and crime laboratories for locating trace evidence and for developing latent prints with fluorescent powders.

FEATURES

- 100 watt bulb
- Battery pack powered
- 12 volt rechargeable, 8 lb. external Battery Pack in a black nylon pouch with shoulder strap
- Provides approximately 6 hours of continuous use
- Long wave into Blue (365-475 nm.)
- Inspection range up to 20 feet (6.1 m.) or more
- 16.5" L X 12" W X 4" H carrying case
- Total kit weight: 10 lbs.



Reorder No.	Description
CK-TFK100	TFK-100 Titan® UV/Blue™ Forensic Lamp Kit
UVT-100L	Replacement 100 Watt Bulb - Set of 3



Hammerhead Forensic Lights

NEW ITEM

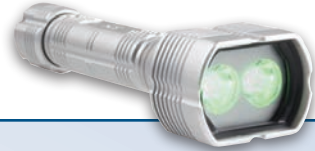
Made of strong, aircraft-grade aluminum, Hammerhead Forensic Lights are designed for heavy use by arson and safety investigators, crime scene personnel, law enforcement, laboratories, and others.

Hammerhead Forensic Lights are easy to maintain as there are no bulbs or filters to replace. Each light runs on 3 CR123 batteries and is accurate to +/- 3 nm.

They feature a non-rolling design and are waterproof, impact, and fire resistant. They come in 6 single wavelengths (White, UV, Blue, Cyan, Green, and IR).



Reorder No. UVH-CY



Reorder No. UVH-GR



Reorder No. UVH-IR



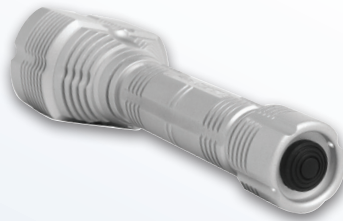
Reorder No. UVH-WH



Reorder No. UVH-UV



Reorder No. UVH-BL



Back view of lights including the Tap On/Off Switch

Uses

- **White:** general inspection
- **UV:** trace evidence location (hairs and fibers), serological evidence (semen, saliva, urine), accelerants/vehicle leaks (oil, gas, turpentine), examining questioned documents
- **Blue:** footwear and other impressions, trace evidence (hairs and fibers), gun shot residue (GSR), blood spatter
- **Cyan:** searching for evidentiary latent prints, applying fluorescent powders to visualize latents as they are processed
- **Green:** searching for evidentiary latent prints, applying fluorescent powders to visualize latents as they are processed
- **IR:** enhancing night vision systems, in conjunction with cameras with infrared capabilities for forensic applications

Features

- Power Consumption: 6.0 Watts
- 8° Focused Beam
- Recommended Operational Distance: 10 ft. (3 m.)
- 2 LEDs (Hammerhead UV models feature 24 LED's)
- Tap Switch (rear of light)
- Thumb Rest
- 2 Modes: Low Power: 20% Intensity / Full Power: 100% Intensity
- Durability: Fire Resistant / Waterproof to 20 ft. (6 m.) / Impact Resistant
- 8.6 oz. (245 g.)
- Size: Length: 6.6" (168 mm.), Head: 2.2" x 1.5" (56 mm. x 38 mm.); Handle (diameter): 1.1" (28 mm.)
- Aluminum 6061-T6 Hard Anodized Housing
- 3 CR123 (Batteries Included)
- Life: Full Power: 2 to 8 hours (varies by mode); Emergency: 10 hours (*Battery life will be dependent on the capacity of the charged battery*)
- Warranty: 24 Months

FEATURES

Reorder No.	Description
UVH-WH	Hammerhead Forensic Light - White, 320 lumen
UVH-UV	Hammerhead Forensic Light - UV, 395 nm.
UVH-BL	Hammerhead Forensic Light - Blue, 470 nm.
UVH-CY	Hammerhead Forensic Light - Cyan, 495 nm.
UVH-GR	Hammerhead Forensic Light - Green, 525 nm.
UVH-IR	Hammerhead Forensic Light - IR, 850 nm.



NEW ITEM

Hammerhead Dual Forensic Lights

Made of strong, aircraft-grade aluminum, Hammerhead Dual Forensic Lights are designed for heavy use by arson and safety investigators, crime scene personnel, law enforcement, laboratories, and others.

Each light runs on 3 CR123 batteries and is accurate to +/- 3 nm. Hammerhead Dual Forensic Lights are easy to maintain as there are no bulbs or filters to replace. They feature a non-rolling design and are waterproof, impact, and fire resistant. They are available in 4 dual lights.



Reorder No. UVH-DWU



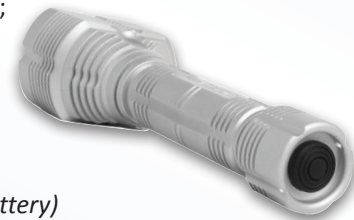
Reorder No. UVH-DUV



Reorder No. UVH-DBC



Reorder No. UVH-DGI



Back view of lights including the Tap On/Off Switch

Uses

- **White:** general inspection
- **UV:** trace evidence location (hairs and fibers), serological evidence (semen, saliva, urine), accelerants/vehicle leaks (oil, gas, turpentine), examining questioned documents
- **Blue:** footwear and other impressions, trace evidence (hairs and fibers), gun shot residue (GSR), blood spatter
- **Cyan:** searching for evidentiary latent prints, applying fluorescent powders to visualize latents as they are processed
- **Green:** searching for evidentiary latent prints, applying fluorescent powders to visualize latents as they are processed
- **IR:** enhancing night vision systems, in conjunction with cameras with infrared capabilities for forensic applications

Features

- Power Consumption: 6.0 Watts
- 8° Focused Beam
- Recommended Operational Distance: 10 ft. (3 m.)
- 2 LEDs (Hammerhead UV models feature 24 LED's)
- Tap Switch (rear of light)
- Thumb Rest
- 2 Modes: Low Power: 20% Intensity / Full Power: 100% Intensity
- Durability: Fire Resistant / Waterproof to 20 ft. (6 m.) / Impact Resistant
- 8.6 oz. (245 g.)
- Size: Length: 6.6" (168 mm.); Head: 2.2" x 1.5" (56 mm. x 38 mm.); Handle (diameter): 1.1" (28 mm.)
- Aluminum 6061-T6 Hard Anodized Housing
- 3 CR123 (Batteries Included)
- Life: Full Power: 2 to 8 hours (varies by mode); Emergency: 10 hours
(Battery life will be dependent on the capacity of the charged battery)
- Warranty: 24 Months

FEATURES

Reorder No.	Description
UVH-DWU	Hammerhead Dual Forensic Light - White + UV, 380 nm.
UVH-DUV	Hammerhead Dual Forensic Light - Double UV, 380 + 395 nm.
UVH-DBC	Hammerhead Dual Forensic Light - Blue + Cyan, 470 + 495 nm.
UVH-DGI	Hammerhead Dual Forensic Light - Green + IR, 525 + 850 nm.



Nomad Portable Lighting System

NEW ITEM

When you need a powerful, go-anywhere light, think Nomad. The Nomad portable, rechargeable, quick deploying lighting system can go anywhere, including uneven terrain. The all-weather, impact-resistant Nomad can be carried through the worst terrains imaginable and still deploy in 20 seconds.



Just 17 lbs. and 33" long, the Nomad Portable Lighting System is available in 3 types of lights: white, blue, and green. The White Nomad is a general area/scene light providing brilliant white lighting. The Blue Nomad is a powerful 470 nm. blue light while the Green Nomad is a 532 nm. green light; both the Blue and the Green Nomads are ideal for locating trace evidence.

An internal rechargeable lithium ion battery provides 2.5 to 9 hours of light for each of the Nomad lights, offering cord-free performance, with no charging at the scene required. The Nomad offers 3 intensities and can be used in carry mode or as a backpack light. Telescoping up to 8 ft. tall with a light head capable of rotating 340°, the Nomad converts from an area light to a spotlight by quickly detaching its diffuser lens.

The tough Nomad Portable Lighting System was designed for Fire, Search and Rescue, EMS, Industrial, Law Enforcement, Crime Scene Investigation, Labs, SWAT (command post), Military, and Photography uses, and much more.

White (UVN-WH)

- 6 white LEDs
- 75 Watt power consumption
- Low: 1,200 lumen; Medium: 2,400 lumen; High: 3,600 lumen

Blue (UVN-BL)

- 24 LEDs: 470 nm. (Blue)
- Use with orange inspections goggles to enhance
- Footwear and Other Impressions; Trace Evidence (Hairs, Fibers, etc.); GSR (Gun Shot Residue); Blood Spatter

Green (UVN-GR)

- 24 LEDs: 532 nm. (Green)
- View latent prints processed with fluorescent dyes and powder; enhances evidentiary latent prints; aides in officer safety when applying fluorescent powders.

Features

- 8° spotlight or scene light
- Distance vision: up to 1.1 mi. (2 km.)
- Deploys in under 20 seconds
- Head can rotate 340°; Head Telescopes up to 94" (239 cm.)
- On / Off / Mode switch at base of unit
- Hold-down clamp; Built-in level and leg adjustments for uneven terrain
- 3 Modes: Low / Medium / High
- Durability: All-Weather / Impact Resistant
- Weight: 17.0 lbs. (7.7 kg.); Size (closed position): Diameter: 4.6" (11.7 cm.), Length: 33.0" (83.9 cm.); Size (when deployed): Max height of 94" (239 cm.)
- Nylon 66 body with 6061-T6 aluminum head; Stainless steel telescoping tube
- Carrying strap (black)
- Rechargeable Lithium-Ion 200WH Battery System
- Battery Life: Low Intensity: 9 hours; Medium Intensity: 6 hours; High Intensity: 2.5 hours
- Fully Recharges in 8 Hours; Power Supply connects to AC or car battery
- Warranty: 24 Months



Reorder No. UVN-BL



Reorder No. UVN-WH

FEATURES

Reorder No.	Description
UVN-WH	Nomad Portable Lighting System - White
UVN-BL	Nomad Portable Lighting System - Blue
UVN-GR	Nomad Portable Lighting System - Green

**NEW ITEM**

Command Forensic Headlamps

This series of six specific application, LED head lights can be used for general (white light) or forensic purposes, either in the lab or at a crime scene for locating a variety of fluorescing evidence. They provide several unique advantages over other types of forensic light sources. Our copolymer Carrying Case (sold separately) contains a gray foam insert to protect your Command Forensic Headlamp when taken to a crime scene.



Reorder No. HL-WH

White Forensic Head Light (Reorder No. HL-WH)

Portable, hands-free 60.0 Lumens (754 Candle Power) Light Source for general purposes use. Provides 3 modes of bright, white light. Easy to maintain; no bulbs or filters to replace.

UV Forensic Head Light (Reorder No. HL-UV)

Portable, hands-free 395 nm. alternative light source with 20 LEDs which provide peripheral (and focused) light. Perfect for Forensic and CSI personnel with specialized needs including enhancing trace evidence such as hairs or fibers, illuminating serological evidence, or examining questioned documents.



Reorder No. HL-UV

Blue Forensic Head Light (Reorder No. HL-BL)

Portable, hands-free 470 nm. Alternate Light Source to help identify Trace Evidence, Gun Shot Residue & Blood Spatter. Provides oblique lighting when set on floors, counters or similar surface. Easy to maintain: no bulbs or filters to replace. Facilitates multi-tasking and enhances officer safety. Used by Forensic and CSI personnel to Search for Footwear and Other Impressions, Trace Evidence, GSR, Blood Spatter.



Reorder No. HL-BL

Cyan Forensic Head Light (Reorder No. HL-CY)

Portable, hands-free 495 nm. Alternate Light Source to view Latent Prints processed with Fluorescent Dyes and Powders. Provides oblique lighting when set on floors, counters or similar surface. Easy to maintain: no bulbs or filters to replace. Used by Forensic and CSI personnel to Search for evidentiary latent prints (fingerprints) while facilitating multi-tasking and enhancing officer safety. Use while applying fluorescent powders to visualize latents as they are processed.



Reorder No. HL-CY

Green Forensic Head Light (Reorder No. HL-GR)

Portable, hands-free 525 nm. Alternate Light Source to view Latent Prints processed with Fluorescent Dyes and Powders. Provides oblique lighting when set on floors, counters or similar surface. Easy to maintain: no bulbs or filters to replace. Used by Forensic and CSI personnel to search for evidentiary latent prints (fingerprints) while facilitating multi-tasking and enhancing officer safety. Use while applying fluorescent powders to visualize latents as they are processed.



Reorder No. HL-GR

Infrared Forensic Head Light (Reorder No. HL-IR)

Portable, hands-free 850 nm. Infrared light meant for specialized needs including enhancing Night Vision Systems or for use with Cameras with Infrared Capabilities for Forensic applications. Hands-free use facilitates multi-tasking and enhances officer safety. Provides peripheral lighting and is easy to maintain as there are no bulbs or filters to replace.



Reorder No. HL-IR

Features

- 20 Powerful LEDs provide astonishingly bright fluorescence of evidence.
- Battery powered (four "AA" batteries). NiCd, NiMH, or Lithium manganese batteries may also be used.
- The hands-free design allows you to locate, document, photograph, and collect evidence.
- The 4.8" wide head light provides superior peripheral vision and is super light weight at only 8.1 oz.

Reorder No.	Description
HL-WH	White Command Forensic Headlamp - 60 lumen
HL-UV	UV Command Forensic Headlamp - 395 nm.
HL-BL	Blue Command Forensic Headlamp - 470 nm.
HL-CY	Cyan Command Forensic Headlamp - 495 nm.
HL-GR	Green Command Forensic Headlamp - 525 nm.
HL-IR	Infrared Command Forensic Headlamp - 850 nm.
CS-120705F	Small Copolymer Carrying Case with foam insert (not shown)

FEATURES



TRIBRITE Tactical Handheld Forensic Light Source Kit

NEW ITEM

TRIBRITE lights feature super-bright LED technology housed in a rugged waterproof, shock resistant, anti-roll, slip-resistant aluminum body. These lights are battery powered and are supplied with a 110v charger. The LED technology allows for ultra long battery life between charges. These kits include the provides you with the either the 415 nm. or the 460 nm. TRIBRITE, the necessary accessories, and a convenient carrying case.



KIT COMPONENTS

- 1 ea. Carrying Case, 12.125 x 7.25 x 5.5, with foam insert
- 1 ea. Tribrite light (either the 415 nm. or the 460 nm.)
- 1 ea. Charger
- 1 ea. 18650 Lithium Ion Rechargeable Battery
- 1 ea. Orange Goggles

Reorder No.	Description
-------------	-------------

- | | |
|-----------|--|
| CK-UVF415 | TRIBRITE 415 Tactical Kit - light purple |
| CK-UVF460 | TRIBRITE 460 Tactical Kit - bright blue |



Hammerhead Forensic Lights Kits

NEW ITEM

Hammerhead Forensic Lights Kits are now available featuring your choice of lights. This is a great way to set up your own Hammerhead Forensic Light system based on your specific needs. Each kit is provided in a hard, protective case along with 3 goggles in yellow, orange, and red. The Hammerhead UVH3 kit comes with one white light and your choice of three additional Hammerhead Lights featured on page 205. The Hammerhead UVH4 kit comes with one white light and your choice of four additional Hammerhead Lights featured on page 205.



KIT COMPONENTS

- 1 ea. Protective Case
- 1 ea. Goggles in yellow, orange, and red
- 1 ea. White light
- 1 ea. Your choice of three (CK-UVH3) or four (CK-UVH4) additional lights

Reorder No.	Description
-------------	-------------

- | | |
|---------|---|
| CK-UVH3 | Hammerhead Forensic Light Kit - 3+1, 3 Lights + White |
| CK-UVH4 | Hammerhead Forensic Light Kit - 4+1, 4 Lights + White |

Admission/Re-Admission Control System

Our Admission Control System provides all necessary components to verify authorization to enter and exit secured areas.

The long wave, 4 watt, UV lamp emits the highest UV intensity of any comparable-sized lamp on the market and is provided with a stand for easy viewing of the subject's hand. It also includes one 16 oz. container of invisible skin stamping ink (blue or green), one invisible ink stamp pad, and one customized rubber hand stamp with your organization's name, logo, or any numbers or letters you require.



SYSTEM COMPONENTS

- 1 ea. Invisible Fluorescent Skin Stamp Ink, 16 oz.
- 1 ea. EA-140 Long Wave 4 Watt UV Lamp
- 1 ea. Lamp Stand
- 1 ea. Stamp Pad
- 1 ea. Custom Rubber Hand Stamp

Reorder No.	Description
-------------	-------------

- | | |
|-----------|--|
| RACS-B120 | H Admission/Re-Admission Control System, blue ink (120V/60Hz.) |
| RACS-G120 | H Admission/Re-Admission Control System, green ink (120V/60Hz.) |
| RACS-B230 | H Admission/Re-Admission Control System, blue ink (230V/50Hz.) |
| RACS-G230 | H Admission/Re-Admission Control System, green ink (230V/50Hz.) |
| UVT-4L | Replacement 4 Watt Tube |

Invisible Fluorescent Skin Stamp Inks

Our Invisible Inks fluoresce a brilliant blue or green when exposed to a long wave ultraviolet (UV) light source. This ink is nontransferable and will not irritate the subject's skin. The ink can be applied to a subject's hand using a rubber hand stamp or by means of a cotton-tipped applicator with which you can number or date the subject's hand.

Custom rubber hand stamps can be ordered with your organization's name, logo, or any letters or numbers you require. Please see our custom products page for more information.



Reorder No.	Description
LC-SIB-16	H Small Invisible Fluorescent Skin Stamp Ink - 500 ml. (16 oz.), Blue
LC-SIB-64	H Regular Invisible Fluorescent Skin Stamp Ink - 1900 ml. (64 oz.), Blue
LC-SIG-16	H Small Invisible Fluorescent Skin Stamp Ink - 500 ml. (16 oz.), Green
LC-SIG-64	H Regular Invisible Fluorescent Skin Stamp Ink - 1900 ml. (64 oz.), Green
PAD-UI	Uninked Stamp Pad

UV Absorbing Spectacles

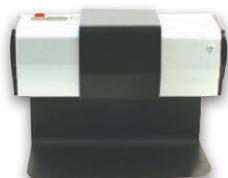


Our anti-fogging, polycarbonate Goggles are lightweight, comfortable to wear, and provide 100% UV eye protection. They were specifically designed to protect the user's eyes from most ultraviolet radiation, reduce eye fatigue, and eliminate "blue haze" interference, thereby improving the contrast between the fluorescent area and the surrounding background.

They meet ANSI specification Z87.1 and OSHA standard 1910.133 for eye protection. Our Goggles can be worn over eyeglasses and are available in orange, yellow, red, and clear versions.

Reorder No.	Description
UVA-GO	Orange UV Absorbing Goggles
UVA-GY	Yellow UV Absorbing Goggles
UVA-GR	Red UV Absorbing Goggles
UVA-G	Clear UV Absorbing Goggles

UV Lamp Stand



This UV Lamp Stand can be used with any of the long wave or short wave UV lamps that TRITECHFORENSICS carries. The stand allows you to slide evidence under the lamp for examination, leaving your hands free for photography or note-taking. (Inset shows lamp stand with lamp, not included.)



Reorder No.	Description
UV-LS	UV Lamp Stand